



# CHD1L Polyclonal Antibody

<b>Catalog No</b>	YP-Ab-02212
<b>Isotype</b>	IgG
<b>Reactivity</b>	Human;Mouse
<b>Applications</b>	WB;ELISA
<b>Gene Name</b>	CHD1L
<b>Protein Name</b>	Chromodomain-helicase-DNA-binding protein 1-like
<b>Immunogen</b>	The antiserum was produced against synthesized peptide derived from human CHD1L. AA range:545-594
<b>Specificity</b>	CHD1L Polyclonal Antibody detects endogenous levels of CHD1L protein.
<b>Formulation</b>	Liquid in PBS containing 50% glycerol, 0.5% BSA and 0.02% sodium azide.
<b>Source</b>	Polyclonal, Rabbit,IgG
<b>Purification</b>	The antibody was affinity-purified from rabbit antiserum by affinity-chromatography using epitope-specific immunogen.
<b>Dilution</b>	Western Blot: 1/500 - 1/2000. ELISA: 1/20000. Not yet tested in other applications.
<b>Concentration</b>	1 mg/ml
<b>Purity</b>	≥90%
<b>Storage Stability</b>	-20°C/1 year
<b>Synonyms</b>	CHD1L; ALC1; Chromodomain-helicase-DNA-binding protein 1-like; Amplified in liver cancer protein 1
<b>Observed Band</b>	101kD
<b>Cell Pathway</b>	Nucleus . Localizes at sites of DNA damage. Probably recruited to DNA damage sites by PARylated PARP1. .
<b>Tissue Specificity</b>	Frequently overexpressed in hepatomacellular carcinomas.
<b>Function</b>	function:Putative DNA helicase, which may play a role in chromatin-remodeling. In vitro, promotes cell proliferation and inhibits apoptois.,similarity:Belongs to the SNF2/RAD54 helicase family.,similarity:Contains 1 helicase ATP-binding domain.,similarity:Contains 1 helicase C-terminal domain.,similarity:Contains 1 Macro domain.,tissue specificity:Frequently overexpressed in hepatomacellular carcinomas.,
<b>Background</b>	chromodomain helicase DNA binding protein 1 like(CHD1L) Homo sapiens This gene encodes a DNA helicase protein involved in DNA repair. The protein converts ATP to add poly(ADP-ribose) as it regulates chromatin relaxation following DNA damage. Several alternatively spliced transcripts variants have been described for this gene. [provided by RefSeq, Jan 2012],



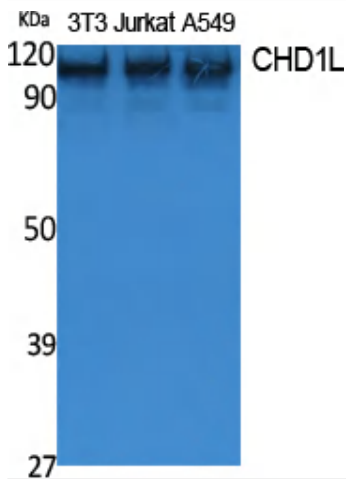
**matters needing attention**

Avoid repeated freezing and thawing!

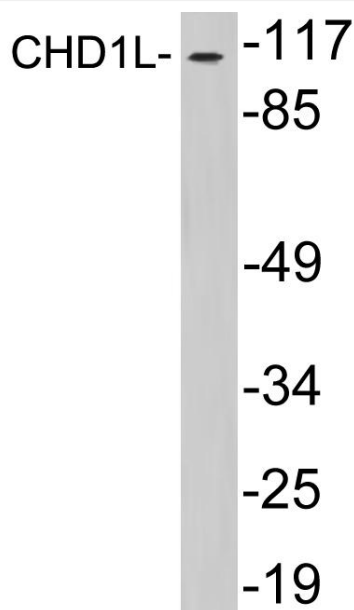
**Usage suggestions**

This product can be used in immunological reaction related experiments. For more information, please consult technical personnel.

## Products Images



Western Blot analysis of extracts from NIH-3T3, Jurkat, A549 cells, using CHD1L Polyclonal Antibody. Secondary antibody(catalog#:RS0002) was diluted at 1:20000 cells nucleus extracted by Minute TM Cytoplasmic and Nuclear Fractionation kit (SC-003,Inventbiotech,MN,USA).



Western blot analysis of lysates from HepG2 cells, using CHD1L antibody.